



PRODUCT CATALOGUE 2012



E2M40 Two Stage Rotary Vacuum Pumps



Edwards E2M40 series two stage oil sealed rotary vane vacuum pumps are renowned for their high ultimate vacuum, rapid pumping speeds, quiet operation and ability to handle water vapour. These direct drive rotary vane pumps are inherently compact and vibration free, and with their finger-proof fan and coupling housings they offer excellent operator protection.

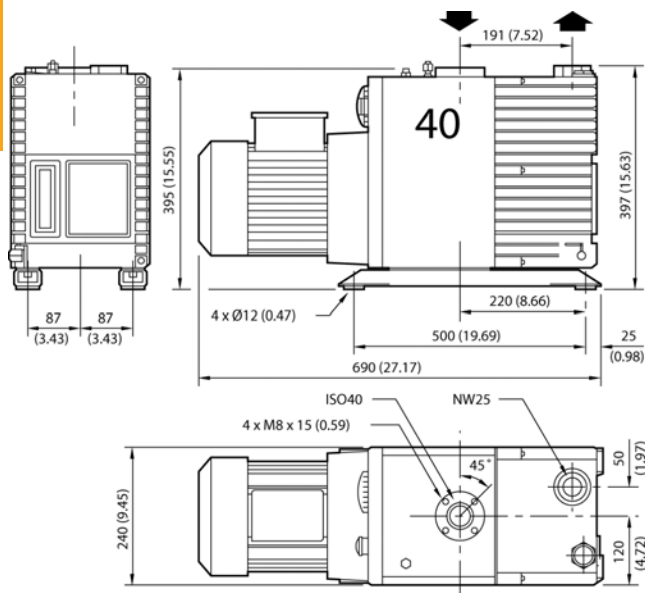
A comprehensive range of accessories is available to allow use on the widest variety of vacuum applications.

Supplied with Ultragrade 70 Oil. Fomblin® must be purchased separately for PFPE prepared pumps E2M40FX, E2M80FX, and E2M175FX.

Features & Benefits

- Advanced pressurised oil circuit to give effective lubrication even under high gas loads
- When the pump is switched off, the spring loaded distributor valve provides oil and air suck-back protection
- Gas Ballast control to assist in handling high water vapour loads
- Industrial roller bearings on drive shaft for ultimate reliability and long, trouble free life
- Full height oil sight glass for easy checking of oil level and condition

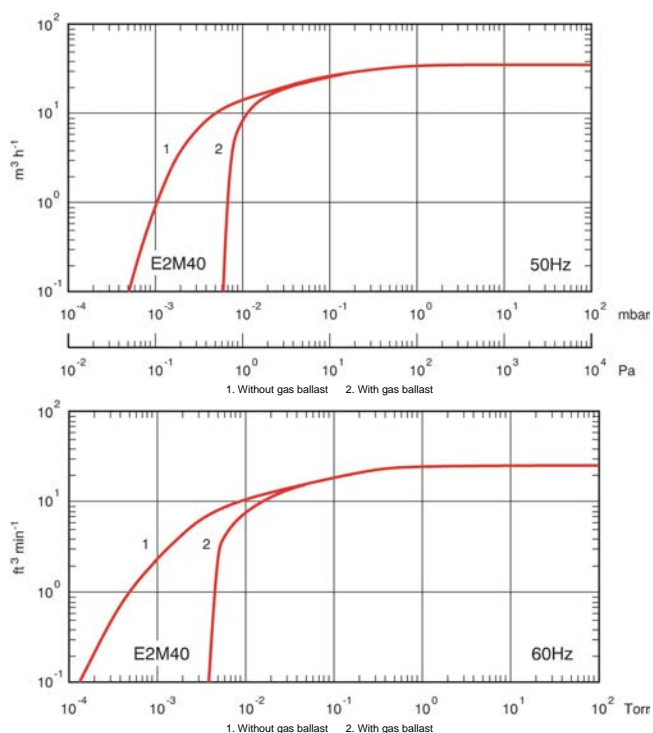
Dimensions



Applications

- Vacuum metallurgy processes
- Thin film coating technologies
- Pharmaceutical freeze drying
- Refrigeration and air conditioning system evacuation, drying, and backfilling
- Transformer and cable drying and impregnation, insulating oil treatment plant

Performance Curves



Technical Data

Displacement	
50Hz	42.5 m ³ h ⁻¹ / 25 ft ³ min ⁻¹
60Hz	50.5 m ³ h ⁻¹ / 29.7 ft ³ min ⁻¹
Speed (Pneurop)	
50Hz	37 m ³ h ⁻¹ / 21.8 ft ³ min ⁻¹
60Hz	44 m ³ h ⁻¹ / 25.9 ft ³ min ⁻¹
Number of stages	2
Ultimate vacuum (total pressure)	
Without gas ballast	1 x 10 ⁻³ mbar / 7.7 x 10 ⁻⁴ Torr
With gas ballast	7 x 10 ⁻³ mbar / 5.4 x 10 ⁻³ Torr
Ultimate with Fomblin®	
Without gas ballast	1 x 10 ⁻² mbar
Inlet connection	ISO40
Outlet connection	25 mm flange suitable for NW25
Max outlet pressure	0.5 bar gauge
Max inlet pressure for water vapour	7 mbar / 5.3 Torr
Max water vapour pumping rate	0.2 kg h ⁻¹ / 0.4 lb h ⁻¹
Weight	72 kg / 159 lb
Motor protection rating	IP44 or IP54
Motor power	
50Hz	1.1 kW / 1.5 hp
60Hz	1.5 kW / 2 hp
Standard oil capacity	
maximum	3.5 litre / 3.2 qt
minimum	1.32 litre / 1.6 qt
PFPE oil capacity	
maximum	3.5 litre / 3.2 qt
minimum	1.32 litre / 1.6 qt
Recommended oil	Ultragrade 70
Noise level	65 dB (A)

Ordering Information

Product Description	Order No.
E2M40 220-240 / 380-415V, 3-ph, 50Hz	A36401935
E2M40 208-230/460V, 3-ph, 60Hz	A36402982
E2M40 200/380V, 3-ph, 50/60Hz	A36401934
E2M40FX 220-240/380-415V, 3-ph, 50Hz	A36411935
E2M40FX 208-230/460V, 3-ph 60Hz	A36412982
E2M40FX 200/380V, 3-ph, 50/60Hz	A36411934
E2M40T4 400V, 3-ph, 50Hz	A36418993
Accessories & Spares	Order No.
Spares Kit C&O E1/2M40 HC/F	A34401131
Spares Kit Blade E1M40	A34401050
Spares Kit Blade E2M40	A36401050
Spares Kit Major E1M40	A34401814
Spares Kit Major Service E2M40	A36401814